

Halti®

DISCOVER THE HALTI *Anatomy* COLLECTION

The award winning range from Company of Animals



FIND OUT MORE

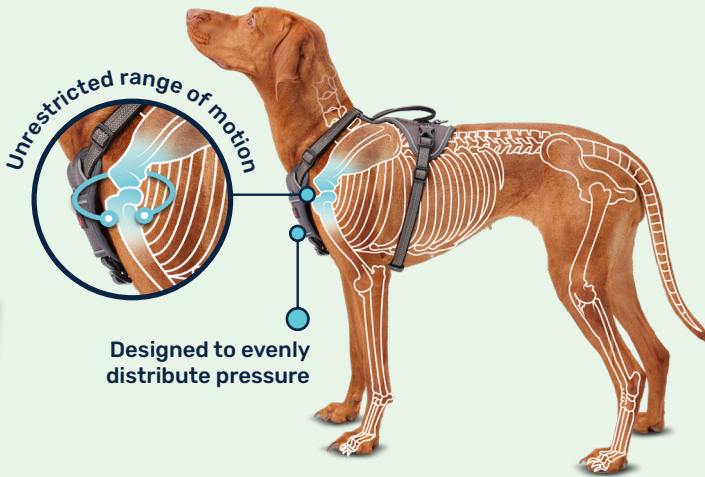




HALTI®

HALTI *Anatomy* COLLECTION

The Anatomy range, backed by scientific studies, offers walking products that are designed around the dog's anatomy and ensure maximum freedom of movement.



WHY *Freedom* OF MOVEMENT MATTERS

When it came to developing a walking harness, we read all the literature and used our in house physio to understand some of the common issues in harness design. We strived to create a harness which fully supports the dogs anatomy, and offers free range of motion.

Prevents Discomfort

Eliminates pressure over the shoulder joint and surrounding soft tissues, ensuring full range of motion and comfort when exercising

Supports Joint Health

Allows your dog's body to move naturally, supporting joint health and reducing the risk of strain or injury.

Enhances Mobility

Provides the freedom for your dog to move comfortably, promoting an active lifestyle and overall well-being.

THE *Anatomy* HARNESS

Designed around your dog's anatomy, this comfort dog harness offers unparalleled freedom of movement, enabling unrestricted shoulder motion, while scalloped back and chest pads provide even pressure distribution.



Sizes: XS, S, M, L, XL

Five-point adjustment

Tailored for a perfect fit, with adjustment points on the neck, chest and sternum, to ensure optimal comfort. The extended distance from the elbow to the chest strap ensures full range of motion, making it one of the best dog harness for walking.

Multi Control. No-Pull Included

Three attachment points for full versatility, including a front and back connection to help reduce pulling on the lead. Plus, the integrated grab handle offers additional control, complete with secure Velcro tab.

Enhanced visibility and comfort

360-degree reflectivity helps you stay visible in low-light conditions. Neoprene padding on the chest and back ensure unparalleled comfort during extended wear.

WHY *Harness* DESIGN MATTERS

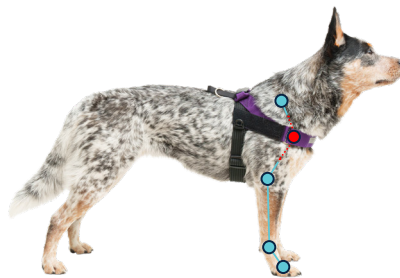
Choosing the right harness design is crucial as it's a daily essential that directly affects their long-term health and well-being.

HALTI ANATOMY HARNESS



- Does not restrict shoulder movement.
- Offers 5 points for adjustment for a customisable fit.
- Scalloped back and chest pads to evenly distribute pressure.
- Flex triangle in the back pad to contour to the body whilst moving.
- Articulated neck straps to adjust with your dog's neck movements.

RESTRICTIVE STYLE HARNESS



- Restricts shoulder movement, limiting range of motion.
- Typically provides only 2 points of adjustment.
- Narrow chest bar, concentrating pressure to a small area.
- Constructed from firm material, lacking flexibility.
- Fixed chest strap that does not adapt to the dog's movement.

DOUBLE ENDED FOR *Multiple* USES

Equipped with a clip at each end for added versatility and control during walks, offering the option for dual attachment with one dog or effortlessly walk two dogs. Enjoy multiple length options to suit different environments and situations, providing versatility and convenience. At its maximum length, the lead is approximately 2 meters (6.6ft). The small lead is suitable for dogs up to 25 kg and the large lead is suitable for dogs up to 55 kg.

Pair it with either the **Halti Anatomy Harness** or **Halti Anatomy Puppy Harness** for the ultimate adventure essentials, providing you and your dog with everything you need.



CLOSE *Control* HANDLE

The integrated grab handle provides immediate, ergonomic access for situations requiring quick intervention. Ideal for managing reactivity, navigating tight spaces, or offering support during rehabilitation – without restricting natural movement.



THE *Anatomy* MULTI LEAD

The Halti Anatomy Multi Lead is your ultimate adventure companion. Designed for versatility, it adapts seamlessly to any outing, whether it's a leisurely stroll or a rugged hike. With its double-ended design, this lead offers maximum flexibility, and it can be used with or without the bungee element to suit your walking style.



Clever Bungee Design

The Anatomy Multi Lead can be used with or without the bungee element – with the bungee to absorb sudden movements for added comfort and safety, or without it as a fixed-length lead for additional control and training purposes.



TopTip

When walking two dogs, utilise the bungee between them to absorb sudden movements while enjoying a comfortable hold and all three lead length options.